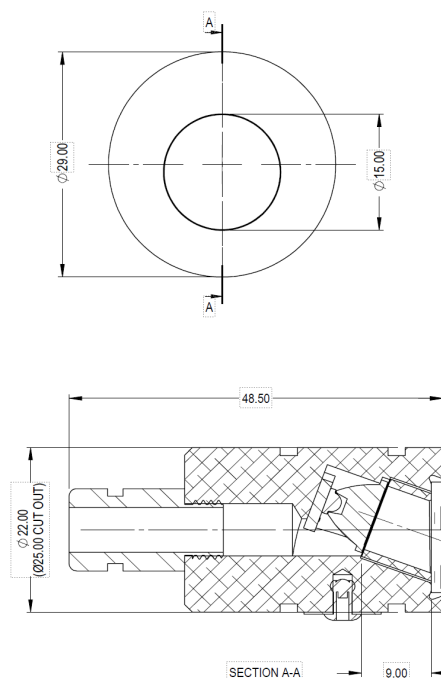


Cockle Wash Uplight

A solid stainless steel in-ground LED baffled uplight, the Cockle range suitable for interior and exterior use, and wonderful at lighting feature walls, columns and architectural elements.

Available in a standard, deep, wash or marine version. It features a 'walk-on' toughened glass lens, making it a hardwearing fitting for a multitude of applications. The LED used produces a warm 2700k tungsten-like light with a CRI of 90+.



Format	Product code	Installation	Beam angle	Tilt	Weight	Cut out	Wattage	Efficiency	Forward voltage	Current	Colour temperature	IP Rating	Lumen output	Standard finish
Wash Light	M3300	Interior/ Exterior	15°	20°	0.05kg	25mm	1.0w	76lm/w	2.9v	350mA	2700k	IP67	76lm	Brushed/Polished stainless

Additional finishes are available on request. All fittings will require a driver. Photometry (IES file) and installation instructions are available on request. Patent pending. Designs registered with GOV.UK

