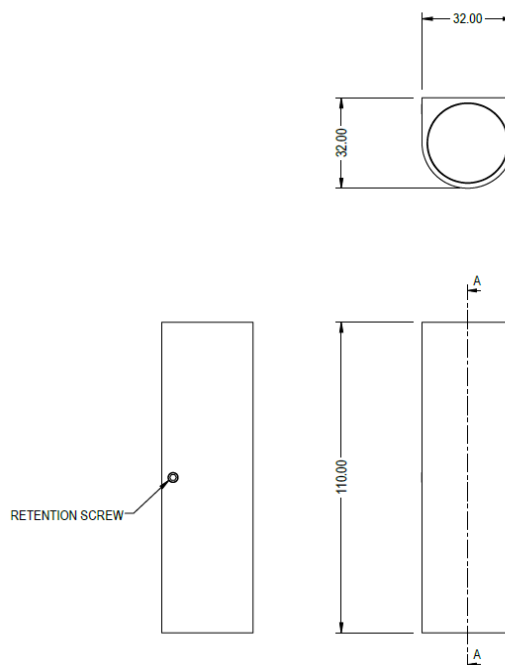


Cockle Wall Light

The most recent addition to our Cockle range, the Cockle wall light is suitable for interior and exterior use. Available with a double or single LED light source, it's a wonderfully discrete, effective and powerful wall light for enhancing and highlighting corners, columns as well as many other architectural elements.

The fitting is fitted with 2700K warm colour temperature Citizen COB LED (s) as standard. At just 2.3W x 2 it is highly efficient whilst still providing a high lumen package of 205lm x 2.



Format	Product code	Installation	Beam angle	Weight	Cut out	Wattage	Efficiency	Forward voltage	Current	Colour temperature	IP Rating	Lumen output	Standard finish
Wall Light	X5623 701	Interior/ Exterior	35°	0.3kg	N/a	2.3w x2	121lm/w	9.0v	260mA	2700k	IP67	205lm x2	Black Anodised

Additional finishes are available on request. All fittings will require a driver. Photometry (IES file) and installation instructions are available on request. Patent pending. Designs registered with GOV.UK