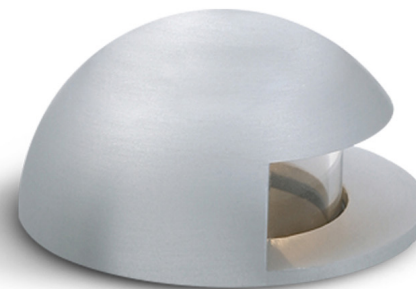
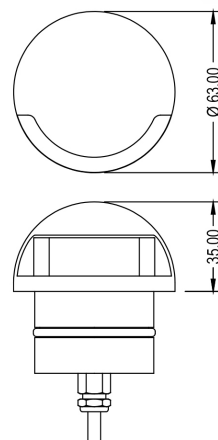


Vizor

A LED in-ground wash light, the Vizor range is suitable for exterior use and produces a broad wash of light in one or two directions, making it ideal for illuminating walkways, or the side of a driveway.

Available with an Uno or Duo aperture, the use of an integral driver ensures mains circuit capability. It is supplied with a 500mm flying lead plus a burial tube for pre-installation. A remote, non-integral version is also available.



Uno Standard

Format	Product code	Installation	Beam angle	Weight	Cut out	Wattage	Efficiency	Forward voltage	Current	Colour temperature	IP Rating	Lumen output	Standard finish
Fixed Uno Standard	E6401	Exterior	-	0.4kg	50mm	1.0w	80lm/w	2.9v	350mA	2700k	IP67	76lm	Polished/Brushed stainless
Fixed Duo Standard	E6403	Exterior	-	0.4kg	50mm	2.0w	80lm/w	5.8v	350mA	2700k	IP67	152lm	Polished/Brushed stainless
Fixed Uno Integral	E6400	Exterior	-	0.5kg	50mm	1.0w	80lm/w	220-240v	-	2700k	IP67	76lm	Polished/Brushed stainless
Fixed Duo Integral	E6402	Exterior	-	0.5kg	50mm	2.0w	80lm/w	220-240v	-	2700k	IP67	152lm	Polished/Brushed stainless

Additional finishes are available on request. All fittings will require a driver. Photometry (IES file) and installation instructions are available on request. Patent pending. Designs registered with GOV.UK

