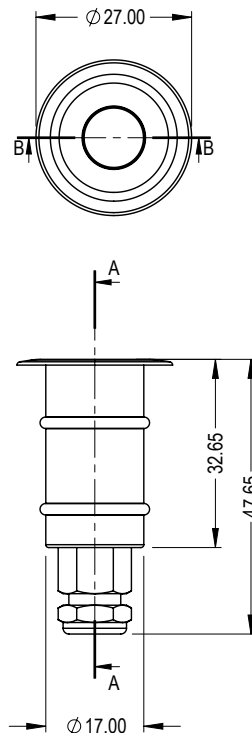


Diode Mini Uplight

The Diode Mini is IP67 rated with a high power 1.0W (350mA) Cree XPE LED, and flush sealed glass making it suitable for internal or external applications.

Manufactured from marine grade stainless steel and anodised aluminium to ensure a rugged, and long-lasting fixture.



Format	Product code	Installation	Beam angle	Weight	Cut out	Wattage	Efficiency	Forward voltage	Current	Colour temperature	IP Rating	Lumen output	Standard finish
Standard	DDM-T/27/15	Interior/ Exterior	15°	0.05kg	23mm	1.0w	80lm/w	2.9v	350mA	2700k	IP67	76lm	Brush/Polished stainless steel
Standard	DDM-T/27/23	Interior/ Exterior	23°	0.05kg	23mm	1.0w	80lm/w	2.9v	350mA	2700k	IP67	76lm	Brush/Polished stainless steel
Standard	DDM-T/27/35	Interior/ Exterior	35°	0.05kg	23mm	1.0w	80lm/w	2.9v	350mA	2700k	IP67	76lm	Brush/Polished stainless steel
Standard	DDM-T/27/0	Interior/ Exterior	Sand blasted glass	0.05kg	23mm	1.0w	80lm/w	2.9v	350mA	2700k	IP67	76lm	Brush/Polished stainless steel

Additional finishes are available on request. All fittings will require a driver. Photometry (IES file) and installation instructions are available on request. Patent pending. Designs registered with GOV.UK